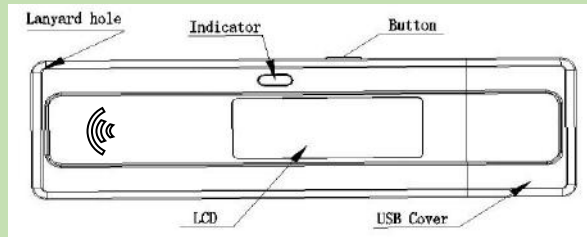


“Mini Reader RT10M”

The “Mini Reader” is the smallest RFID reader known today. In spite of its very small size the reading range is equal or even greater than other bigger models and more expensive.

This product is mainly used for animal tag ID microchip. It can read any work based on ISO 11784 / 85 protocol animals tags especially the FDX B.



Technical parameter

Frequency	134.2KHz
Battery	Li-ion, 3.7VDC,170mAH
Charging current	5VDC on USB connector
Charging indication	Red LED in charging. Green LED when complete.
Read Range	≥ 70/80 mm
Read indication	Beep、 Blue LED、 LCD indication
Dimensions	109×34×14mm
Operating temperature: (while battery under charge)	+5° /40°
Memory	128 ID numbers

Operation

Power on

Push the button, the “Mini Reader” power on. The LCD display shows :

Mini Reader

Power off

The “Mini Reader” will auto power off in the absence of any action after 15 seconds except if it is connected to a PC USB port directly or by a cable line.

Set language

When the “Mini Reader” is power on, press the button 2/3 seconds until to hear a “beep”, in order to enter to setting “LANGUAGE” or “MEMORY” mode. While displaying language press briefly the button. The different languages will scroll on the display. Each language will remains 2 seconds. When the language you want to setting, just push the button. Then the reader will use the setting when next power on.

Remarks: when the battery LI-Ion is low powered, the key reader may not read any tag or can read in a very short distance. If the temperature is lower than 10° the reading range will be decreasing

Scanning for an animal tag

Push the button. Scan slowly the area where a microchip is expected to be found while keeping the reader for a few centimeter's distance from the animal's skin. The reader will be scanning for about 20 seconds. The blue light flash, the display is black.

If a tag is detected the reader will “beep” and the identification number is displayed as follow:

XXX xxxxxxxxxxxx

XXX = country ISO code or manufacturer code (3 figures)

xxxxxxxxxx = individual identification number, (12 figures).

If no microchip has been found after 20 seconds searching, the following message will be displayed on the screen. The LCD screen will stop displaying the message after about 15 seconds.

No tag found!

If this situation arises, try finding the microchip again. To do so you must re-activate the reader by pressing the button. Scan the possible microchip implantation area with as large and sweeping movement as possible. If necessary, repeat the operation after having re-activated the reader again.

Charging the battery

Directly connected to PC USB the Mini Reader will be charging automatically .

Red light when in charging, green light when charge is complete.

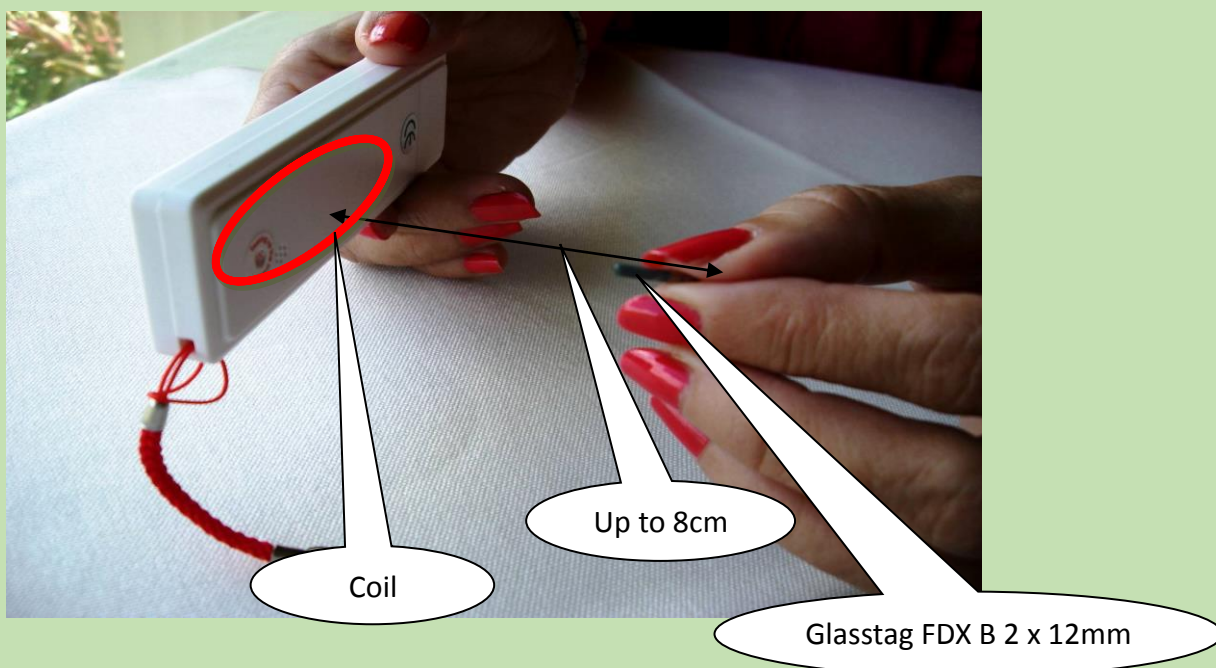
Remarks: when the battery LI-Ion is low powered, the key reader may not read any tag or can read in a very short

distance. If the temperature is lower than 10° the reading range will be decreasing.





Reading range



How to use “Realtrace Terminal” with RT10M?

If you want to use the memory function of your RT10M reader and to transfer the ID numbers memorized by the reader (maximum 150 ID) to your PC, you need to install the right driver and also “Realtrace Terminal”.

Without this software you cannot recover the data sent by the reader to the PC.

If so still check that you have the latest version of these tools. The latest driver for V8, Mini reader RT10M and RT250 driver is available at the following link:

<http://www.realtrace.com/theme/realtrace/docs/en/drivers/RTDriver.zip>

The latest version of the Realtrace Terminal is available at the link below:

<http://download.realtrace.com/RealtraceTerminal.exe>

How to activate and deactivate the memory ?

Activation of the function of Memory.

When the reader is switched off, push the button without relaxing the pressure until to hear a “Beep”, in order to enter to setting “LANGUAGE” or “MEMORY” mode. Stop to push the button when the display shows “MEMORY”. Push promptly again the button while “MEMORY” is displayed. The display shows “ENABLE MEM.”.

Push promptly again the button the display shows “OK” and ‘GOODBYE” The reader switch automatically. Now the memory is enabled.

Deactivation of the function “Memory”

When the reader is switched off, push the button without relaxing the pressure until to hear a “Beep”, in order to enter to setting “LANGUAGE” or “MEMORY” mode. Stop to push the button when the display shows “MEMORY”.

Two possibilities:

- The function of the memory was enabled but there is no “chip” memorized. The message displayed is “DISABLE MEM.” ----> “OK”---->”GOODBYE
- The function of the memory was enabled but there are “chip” memorized. The message displayed is “SEND” “ERASE” MEM.” ----> “OK” --->”GOODBYE”

Using the memory

When the memory is enabled, each time a new tag is read the reader displays the number and stores it in the memory. The display shows also the number of tags recorded in the memory of the reader. If the same “chip” is read two times the reader display “DUP”.

How to transfer the contents of the memory to a PC?

To transfer the contents of the memory you must connect the reader **switched off** to the USB port of the PC directly or via an USB cable. Run the Realtrace Terminal software.

Make sure in the Menu "Options" that the choice "Shows all data" is not activated.

Push the button without relaxing the pressure until to hear a "Beep", in order to enter to setting "LANGUAGE" or "MEMORY" mode. Stop to push the button. When the display shows "MEMORY". Push promptly again the button while "MEMORY" is displayed. The display shows "SEND". If you select "SEND" pushing promptly the button, all numbers of tags stored in the memory of the reader will be transferred to the Realtrace Terminal window and the reader switch off automatically. Then the display shows "ERASE"

Select "ERASE" pushing promptly the button. All data are erased of the memory and the reader will switch off automatically. Then you can disable the memory selecting "DISABLE MEMORY". The memory function is removed and the reader switch off automatically.

Without selecting a function, after three cycles, the reader switch off automatically.

***Don't forget to install the RT10M driver.**

Using the "Realtrace Terminal with RT10M"

This software is a tool provided for free to all users of the RFID Realtrace V8BT, RT10M and RT250 readers.

Initial setup of the "RealTrace Terminal" software

After installing the software on your PC, the setting is **normally automatic**. However with some PCs you must do it manually. In this case you have to go to " File " then " Connection Properties " then " Enter the port number " that has been allocated either automatically or by your PC.

The correct settings are:

- bits per second: 9600
- data bits: 8
- stop bits: 1
- parity: none
- flow control: none

"Options" menu

Choose your language.

You can choose between French, English, Spanish, and Chinese.

Select the data you want to appear:

With the RT10M it is not possible to select all datas

If you do not select "All Data" only the ISO number of the "chip", or 15 numeric characters (FDXB and HDX), or 10 Hexadecimal characters (FDX A) will be displayed.

Example: **939 000004095425**

Do not forget to declare the type of keyboard you use - AZERTY or QWERTY - if not you risk having inconsistent signs being displayed on the PC screen.

"File" menu

The **"Save"**, **"Delete"** and **"Exit"** functions are classic.

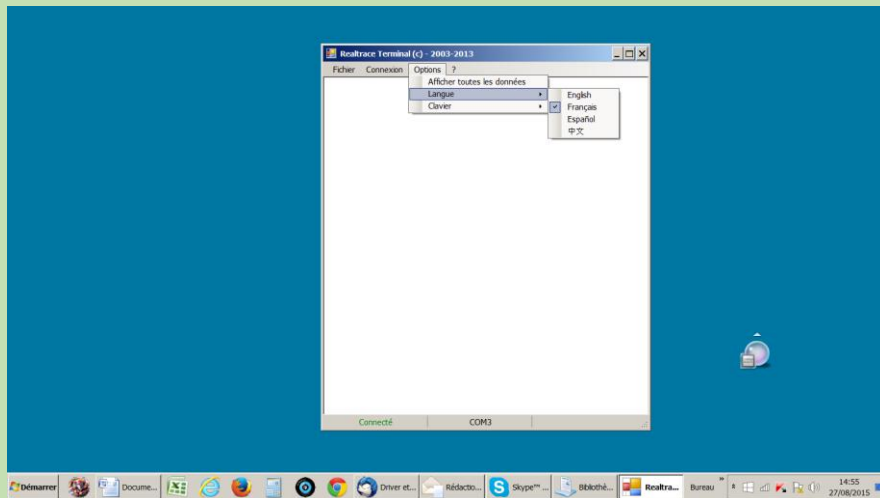
The **"Linking an application"** function when selected allows you to link the data sent by the reader to the PC to a Windows application (Word, Excel, etc.) and simultaneously displayed in the "RealTrace Terminal" window. You then have five seconds to open your application, Word, Excel, etc. After this period if no If you want to save an Excel file, a number or a list of numbers stored in the memory of the reader you must select application is opened data will be sent to the Realtrace Terminal and appear on the initial screen.

"Connection" Menu

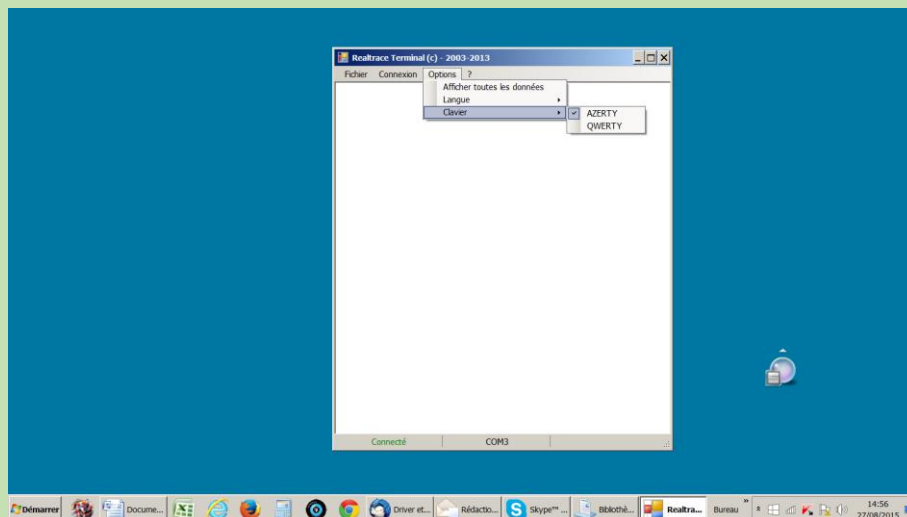
Obviously for reconnection to be possible, the reader must be turned on.

Menus "Realtrace Terminal" software

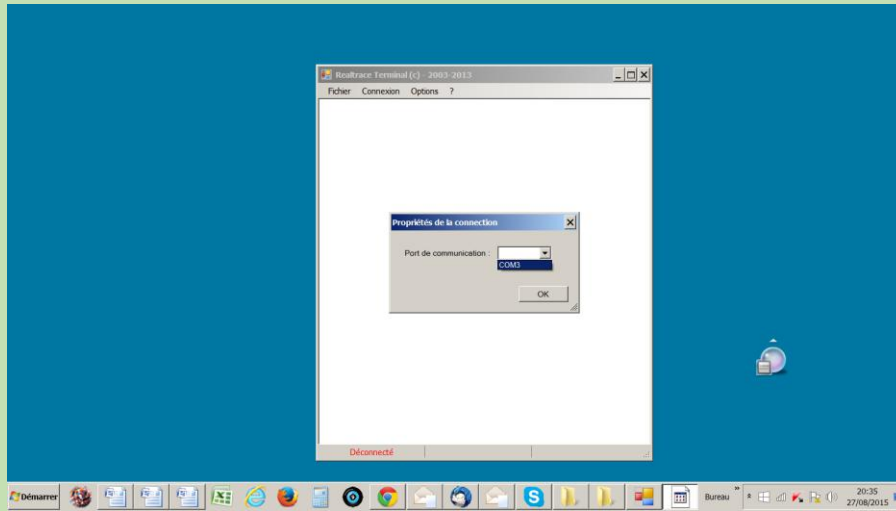
Language Selection



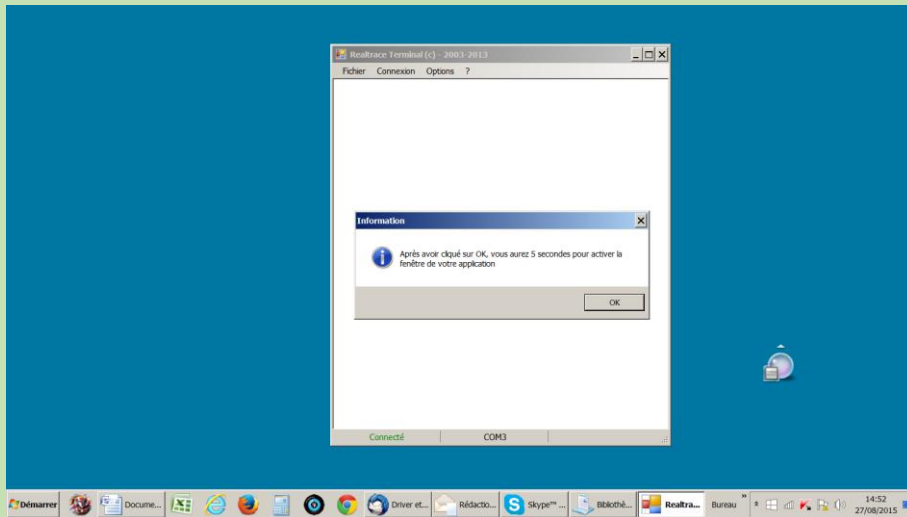
Keyboard Type



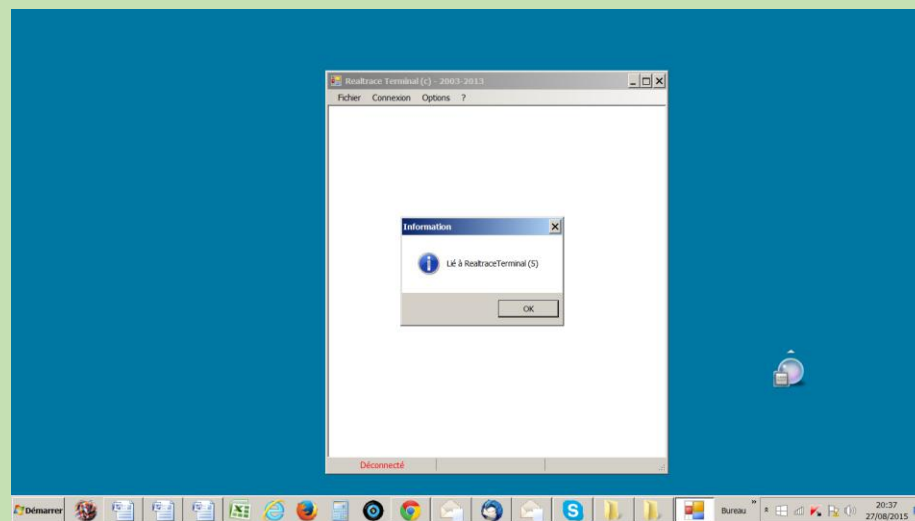
Communication Port Selection



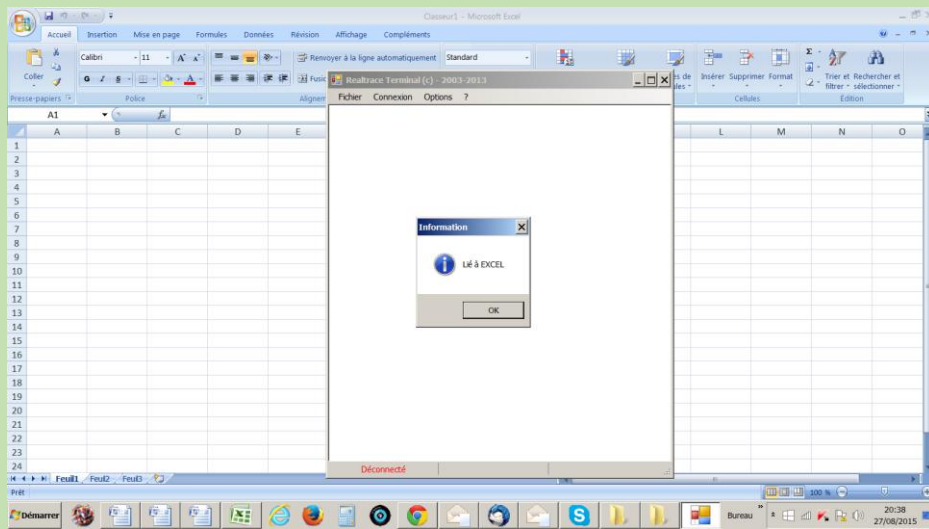
Linking an application



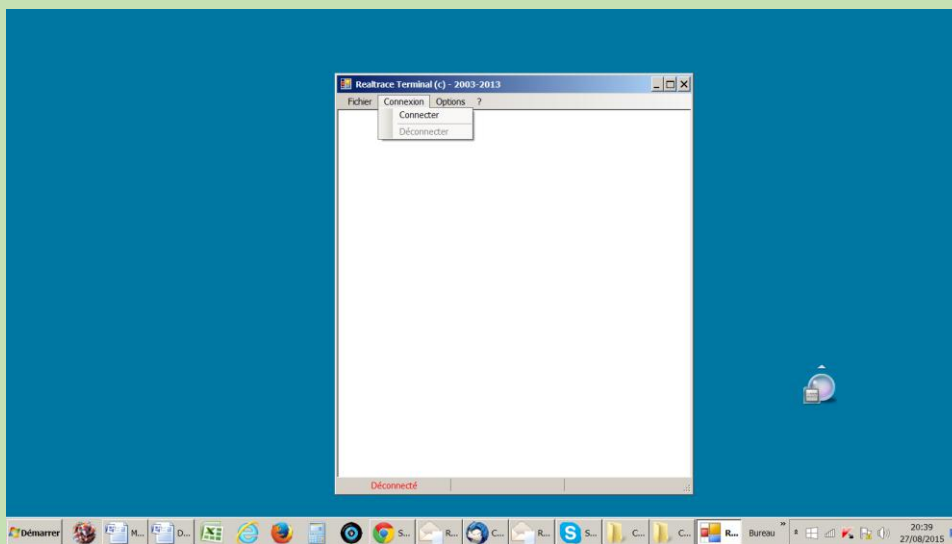
Selecting application after the 5-second delay



Application open within 5 seconds: Excel



Connect!



Simple view: only ISO number

